

# Developing Simple NDN Applications

**NDN Tutorial – ACM ICN 2016**










September 26, 2016, Kyoto, Japan

Alex Afanasyev and Davide Pesavento

<https://named-data.net/icn2016-tutorial>

# Demo Setup

Will use Google Cloud VMs

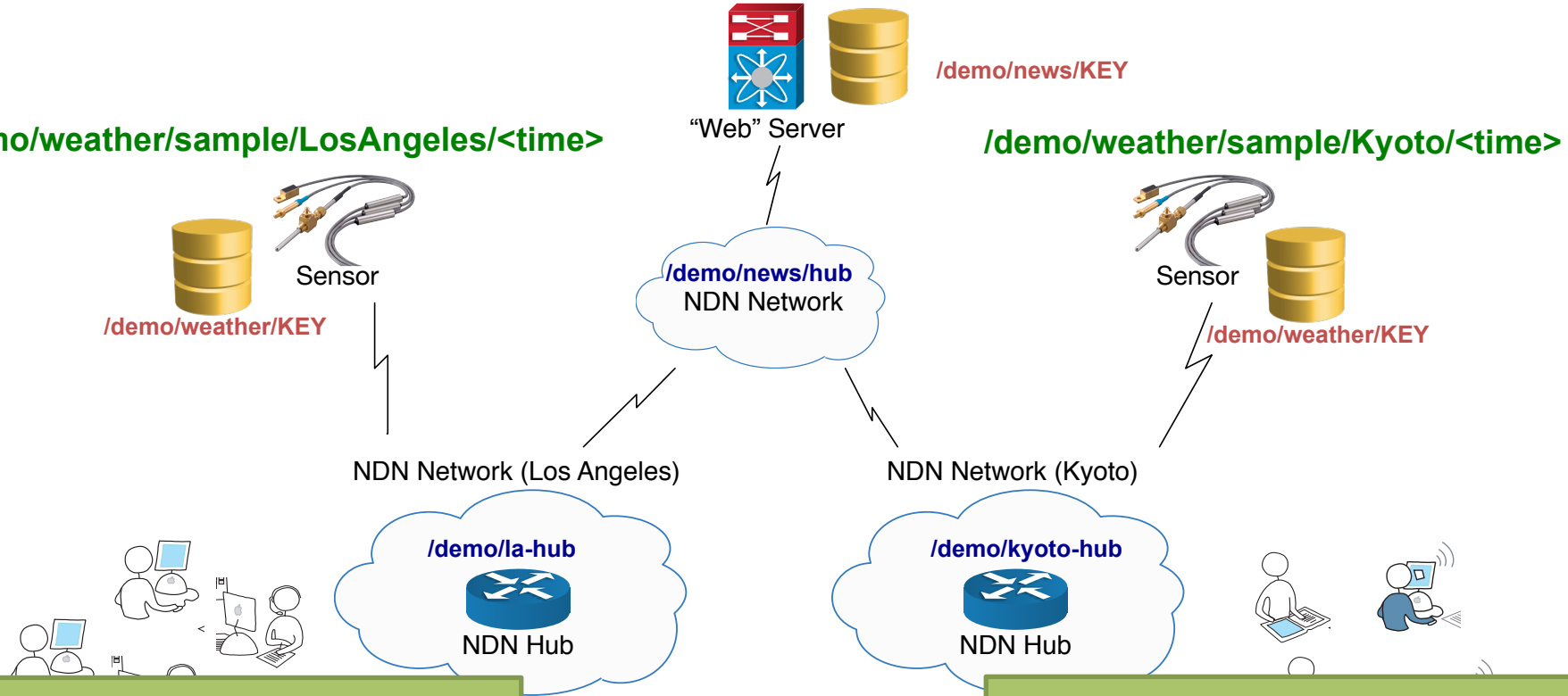
<input type="checkbox"/> Name ^	Zone	Machine type	In use by	Internal IP	External IP	Connect
<input type="checkbox"/>  <a href="#">kyoto-client-1</a>	asia-east1-a	1 vCPU, 0.6 GB		10.0.2.3	<a href="#">107.167.179.186</a> ↗	SSH ▾
<input type="checkbox"/>  kyoto-hub-1	asia-east1-a	1 vCPU, 0.6 GB		10.0.2.2	<a href="#">107.167.179.209</a> ↗	SSH ▾
<input type="checkbox"/>  kyoto-sensor-1	asia-east1-a	1 vCPU, 0.6 GB		10.0.2.4	<a href="#">104.199.184.137</a> ↗	SSH ▾
<input type="checkbox"/>  la-client-1	us-west1-a	1 vCPU, 0.6 GB		10.0.1.3	<a href="#">104.198.12.164</a> ↗	SSH ▾
<input type="checkbox"/>  la-hub-1	us-west1-a	1 vCPU, 0.6 GB		10.0.1.2	<a href="#">104.198.15.188</a> ↗	SSH ▾
<input type="checkbox"/>  la-sensor-1	us-west1-a	1 vCPU, 0.6 GB		10.0.1.5	<a href="#">104.198.7.244</a> ↗	SSH ▾
<input type="checkbox"/>  ndnsim-1	us-central1-b	1 vCPU, 3.75 GB		10.128.0.2	None	SSH ▾
<input type="checkbox"/>  news-1	us-east1-c	1 vCPU, 0.6 GB		10.0.3.3	<a href="#">104.196.22.250</a> ↗	SSH ▾
<input type="checkbox"/>  other-net-hub-1	us-east1-c	1 vCPU, 0.6 GB		10.0.3.2	<a href="#">104.196.177.138</a> ↗	SSH ▾

# Demo Setup

*/demo/news/page/<date><version>/<segment>*

*/demo/weather/sample/LosAngeles/<time>*

*/demo/weather/sample/Kyoto/<time>*



ssh demo@107.167.179.186

ssh demo@104.198.12.164

# Coding Demo

- Writing trivial news server based on skeleton app
- Showing code of trivial sensor app
- Demo news server and sensor using ndnpeek. Demonstration of
  - ndndump
  - wireshark with NDN dissector
  - ndn-dissect
- Writing a trivial NDN.js based app and demo it
  - `var face = new Face({host: "107.167.179.209"});`
  - `var face = new Face({host: "104.198.12.164"});`